

POLIMOR[®]

DIVISIONE PLASTICA

Maniglie / Handles

Upgrade 1.0 [2022]



Polimor: nuovi materiali vestono nuove forme

Polimor: new materials dress new shapes

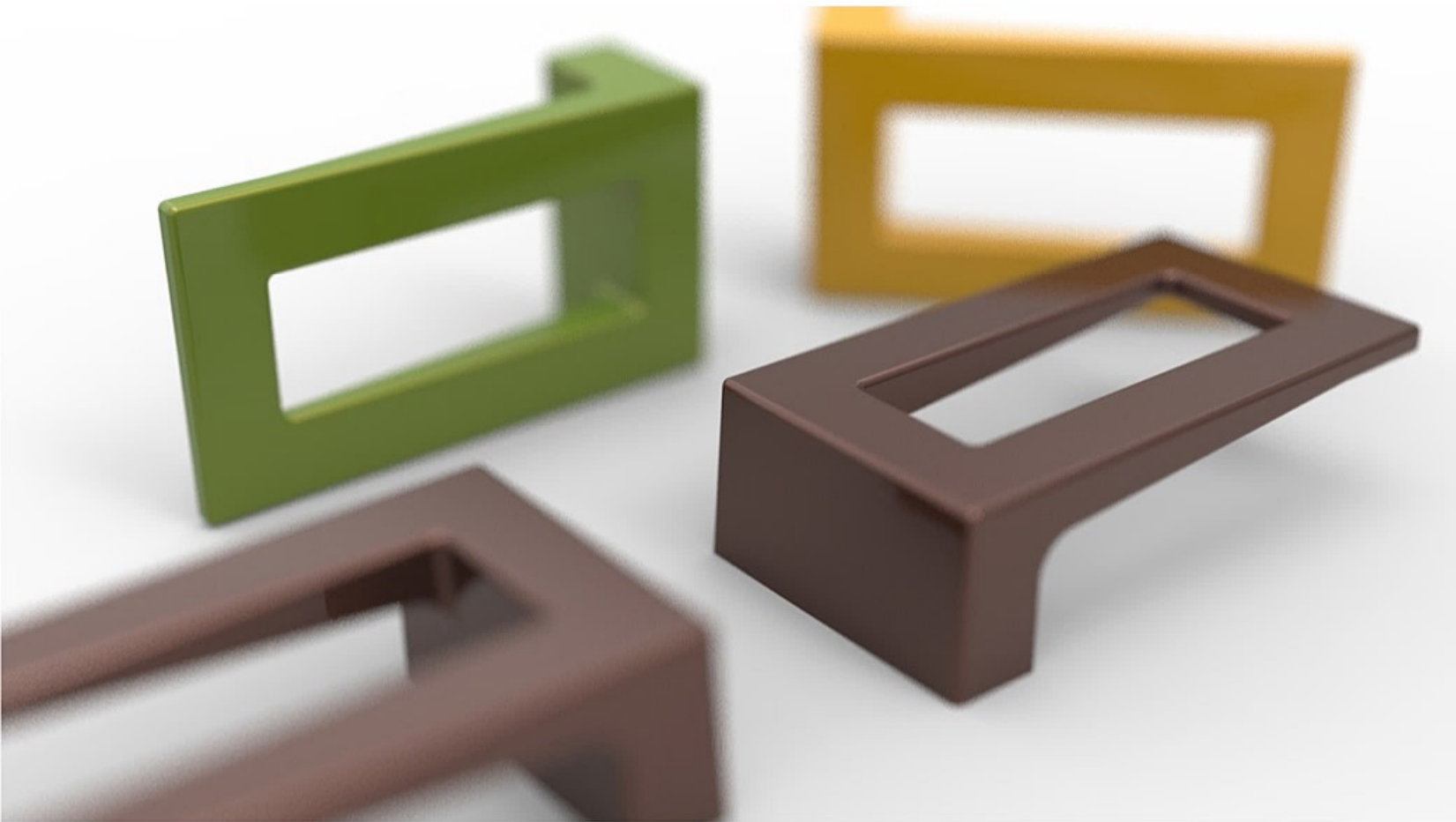
Evoluzione del prodotto e del design

Le maniglie, i pomelli, i profilati e gli accessori per l'industria del mobile non sono semplici componenti in plastica: nuovi materiali vestono la materia di base che viene così trasformata e nuovamente interpretata. Polimor, azienda leader nel settore, propone numerose soluzioni di complementi d'arredo frutto di un'avanzata ricerca tecnologica e di una costante e incessante spinta all'innovazione che garantisce la conformità ai più alti standard qualitativi.

La nuova collezione Polimor dà una risposta esauriente a qualsiasi esigenza di arredamento, perchè propone un design elegante, versatile e di tendenza, unito alla ricercatezza estetica delle forme e dei materiali. Per uno stile che va oltre la materia.

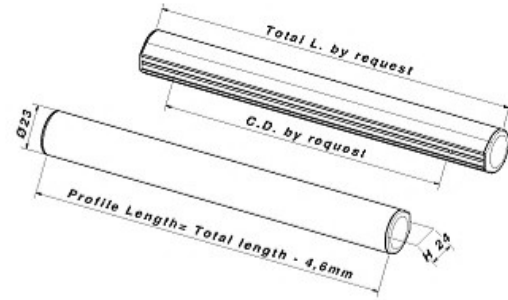
Design and product in evolution

Handles, knobs, profiles and accessories for the furniture industry are more than just a piece of plastic: new materials are used to cover the basic part, giving it a brand new look. Polimor, a leading company in such area, designs a wide range of furnishing accessories, all of which are the result of high tech research programmes and an ongoing commitment to innovation. All its products conform to the highest quality standards and the new collection provides the perfect solution to all possible furnishing needs, as its elegant, versatile, contemporary design is backed by a polished sense of shape and content: style which goes beyond the material.



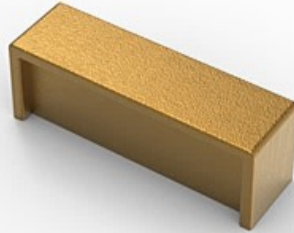
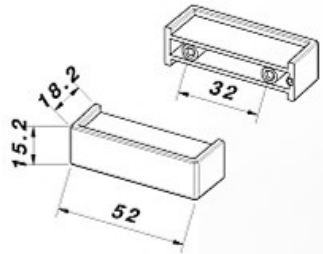
M2242/F **ABS**
INTERASSE: a richiesta
LUNGHEZZA: a richiesta
DIAMETRO: 23mm
 Centre Distance: by request
 Length: by request
 Diameter: 23mm

Componenti Components
P447: profilo P447: profile
A447A: tappo A447A: end cap

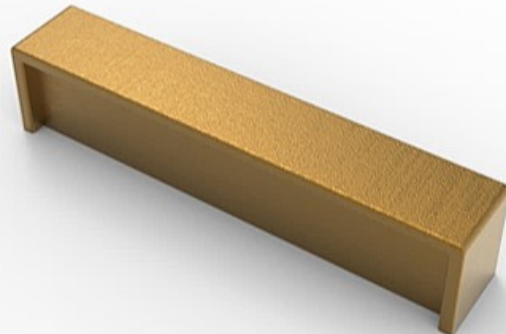
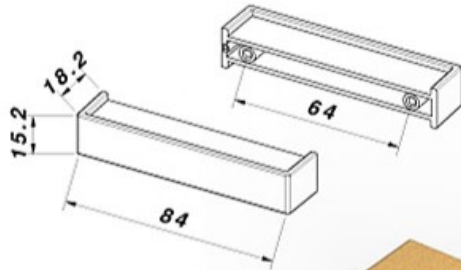




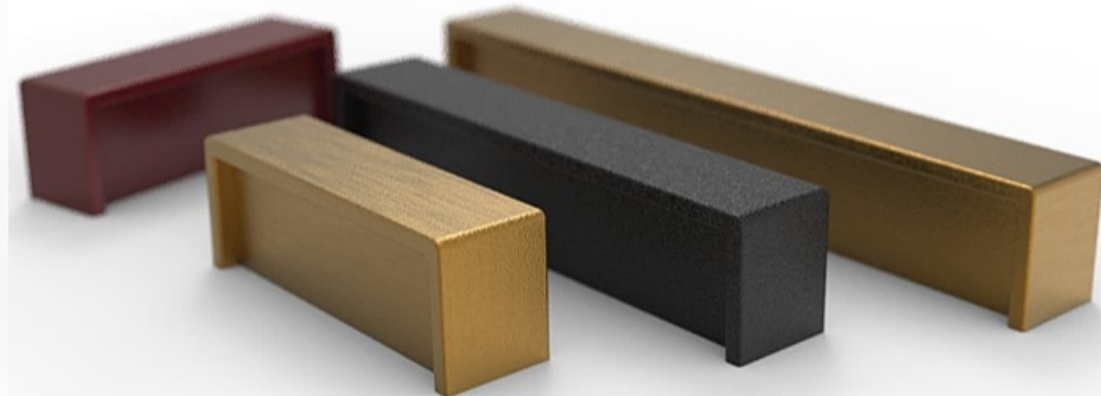
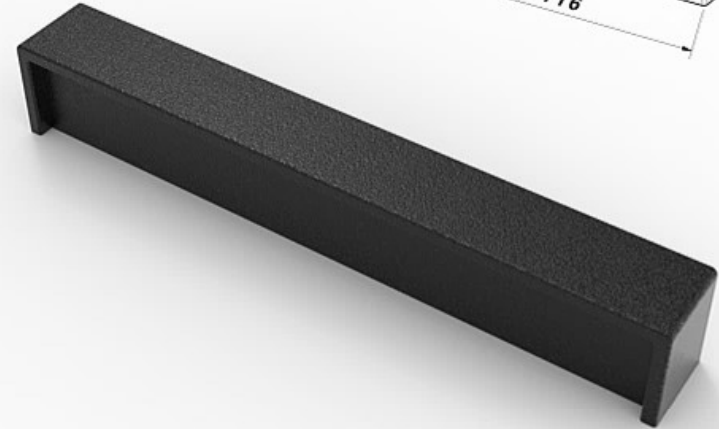
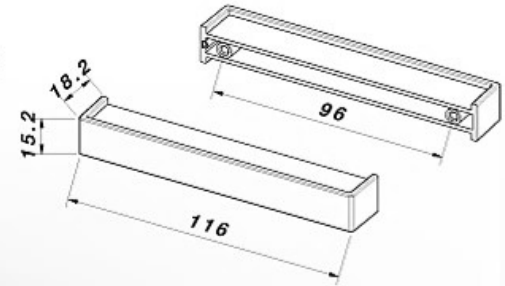
M2238/F ABS
 INTERASSE: 32mm / LUNGHEZZA: 52mm
 LARGHEZZA: 15.2mm / ALTEZZA: 18.2mm
 Centre Distance: 32mm / Length: 52mm
 Width: 15.2mm / Height: 18.2mm



M2239/F ABS
 INTERASSE: 64mm / LUNGHEZZA: 84mm
 LARGHEZZA: 15.2mm / ALTEZZA: 18.2mm
 Centre Distance: 64mm / Length: 84mm
 Width: 15.2mm / Height: 18.2mm



M2240/F ABS
 INTERASSE: 96mm / LUNGHEZZA: 116mm
 LARGHEZZA: 15.2mm / ALTEZZA: 18.2mm
 Centre Distance: 96mm / Length: 116mm
 Width: 15.2mm / Height: 18.2mm



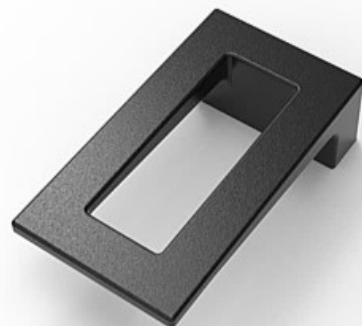
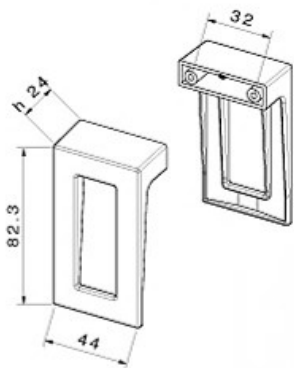




M2238/F

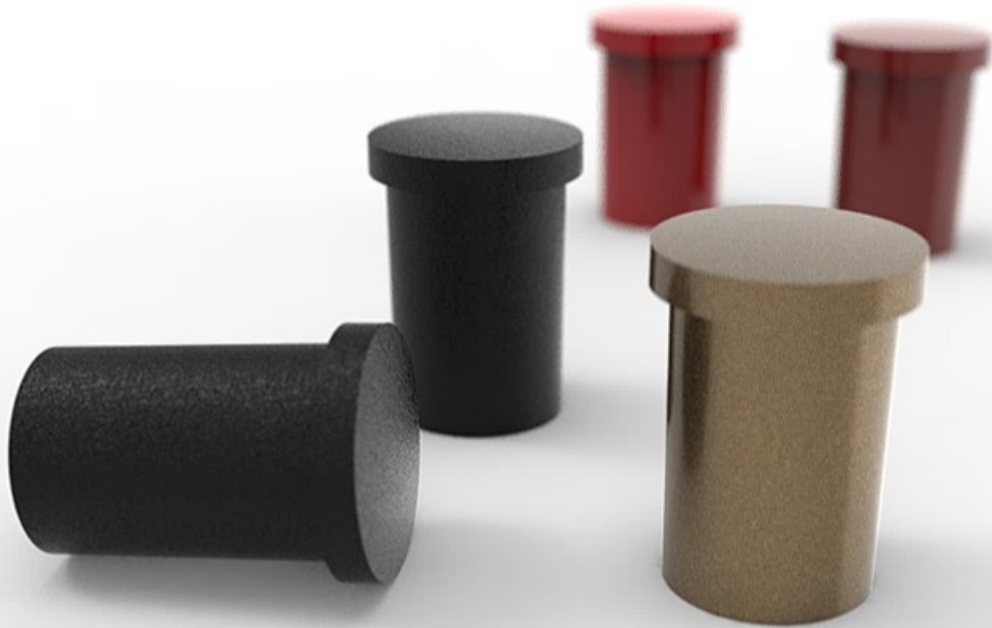
ABS

INTERASSE: 32mm / LUNGHEZZA: 52mm
LARGHEZZA: 15.2mm / ALTEZZA: 18.2mm
Centre Distance: 32mm / Length: 52mm
Width: 15.2mm / Height: 18.2mm



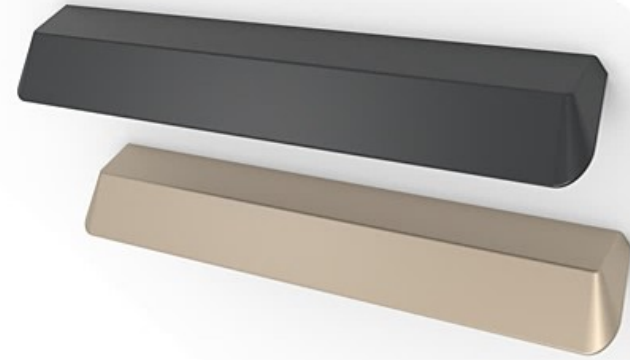
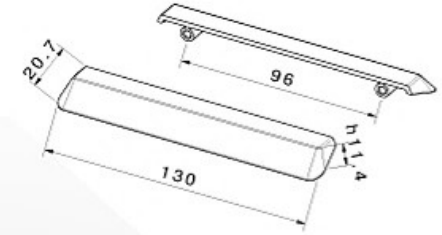
M2233/F

ABS
INTERASSE: 0mm
DIAMETRO: 17mm / ALTEZZA: 23.2mm
 Centre Distance: 0mm
 Diameter: 17mm / Height: 23.2mm



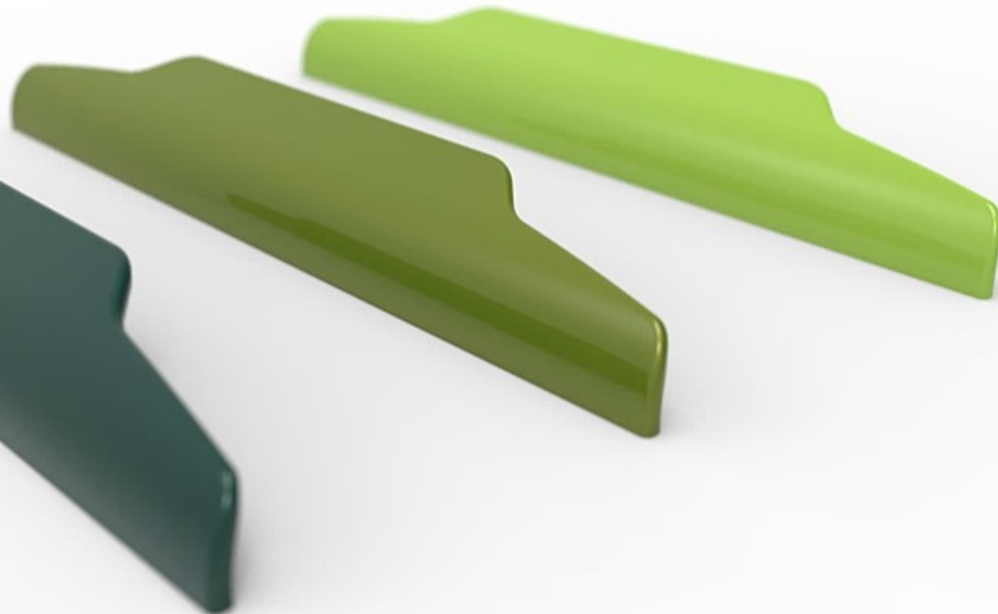
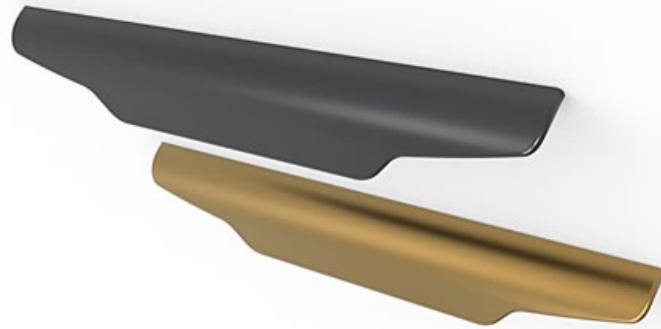
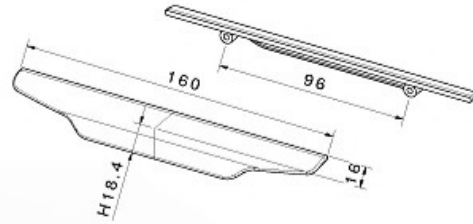
M2230/F

ABS
INTERASSE: 96mm / LUNGHEZZA: 130mm
LARGHEZZA: 20.72mm / ALTEZZA: 11.4mm
 Centre Distance: 96mm / Length: 130mm
 Width: 20.7mm / Height: 11.4mm



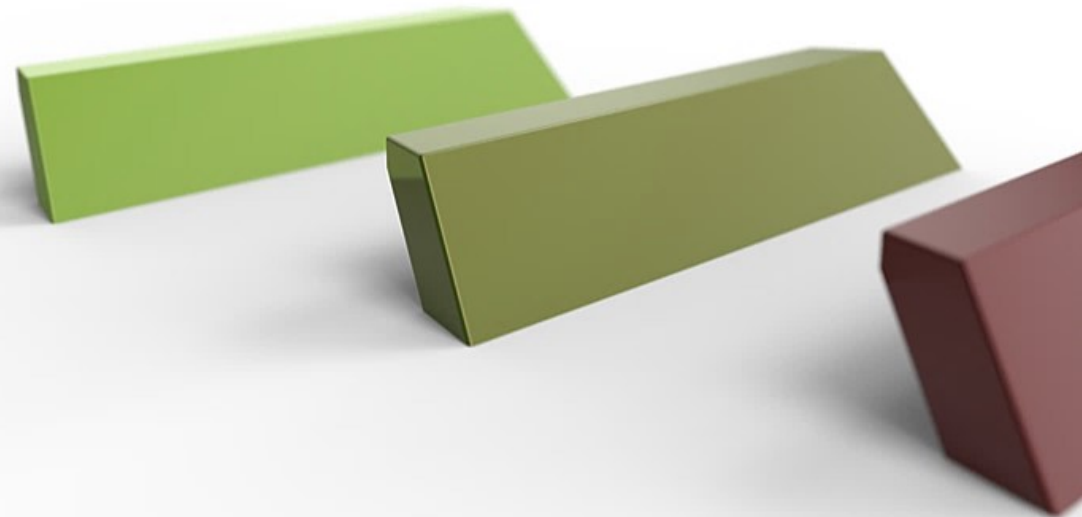
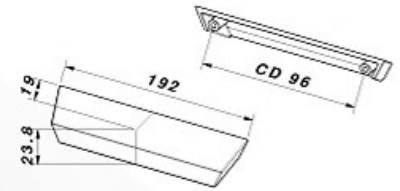
M2228/F

ABS
INTERASSE: 96mm / LUNGHEZZA: 160mm
LARGHEZZA: 16mm / ALTEZZA: 18.4mm
 Centre Distance: 96mm / Length: 160mm
 Width: 16mm / Height: 18.4mm



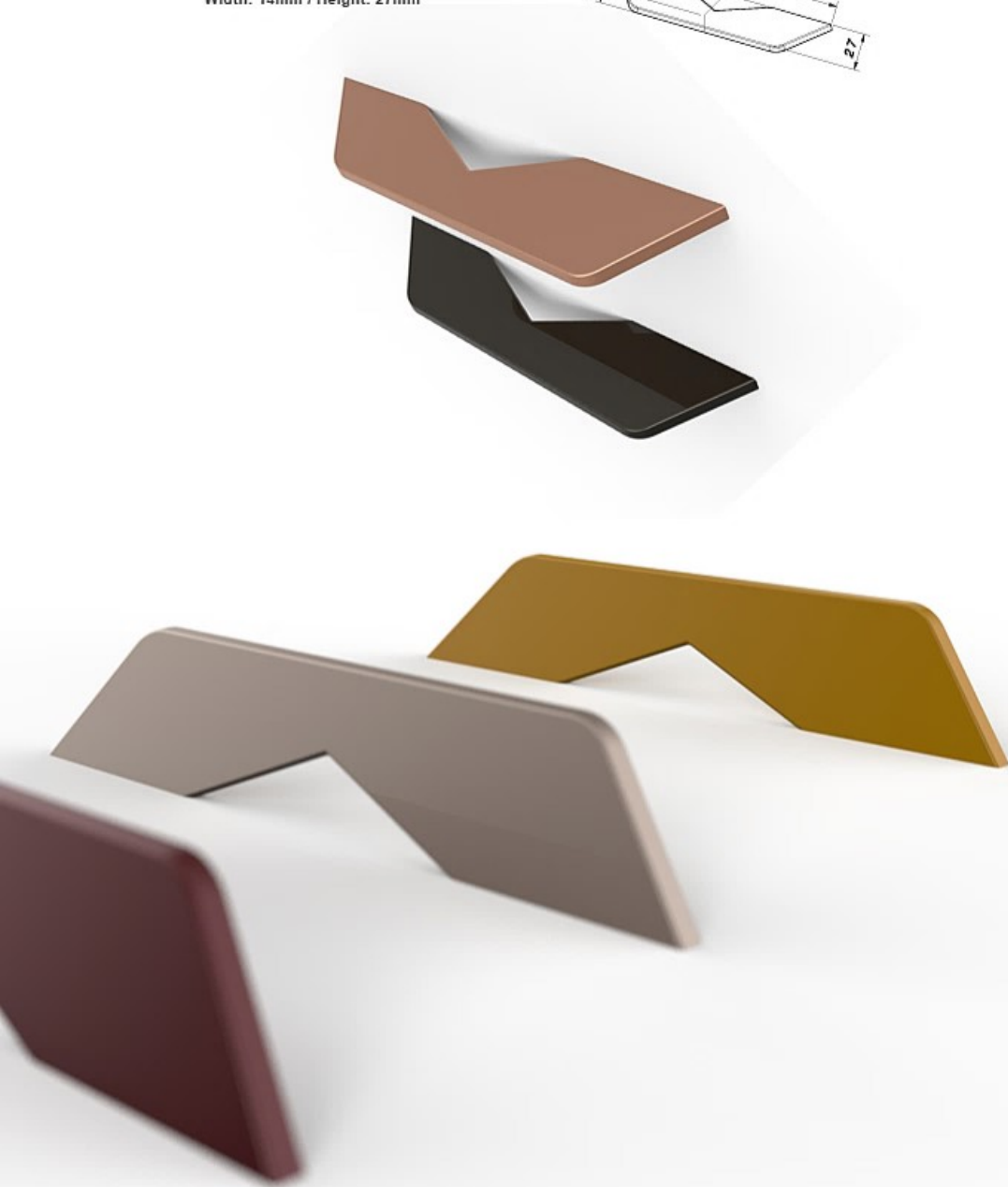
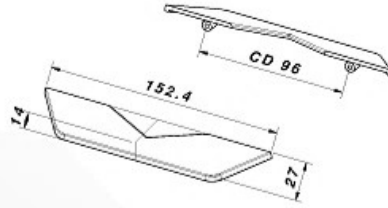
M2228/F

ABS
INTERASSE: 96mm / LUNGHEZZA: 192mm
LARGHEZZA: 19mm / ALTEZZA: 23.8mm
 Centre Distance: 96mm / Length: 192mm
 Width: 19mm / Height: 23.8mm



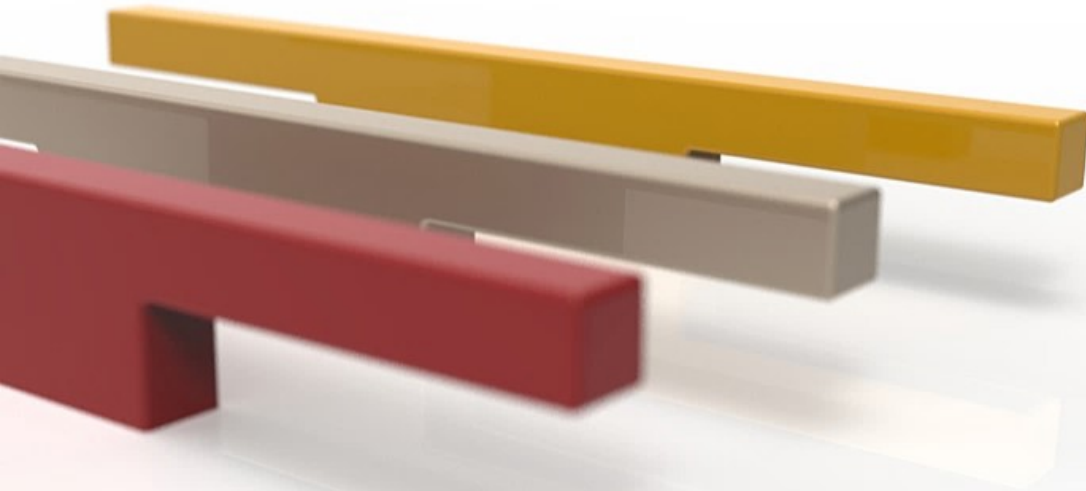
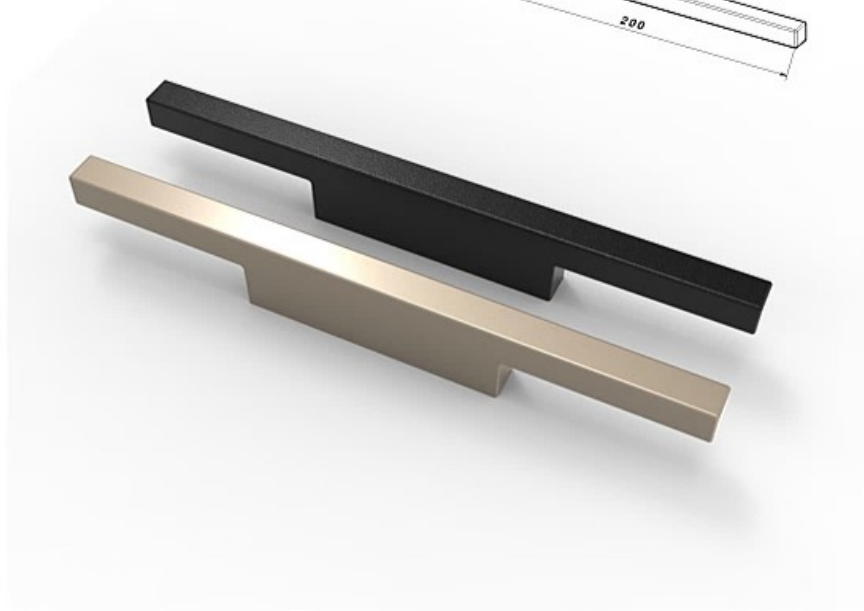
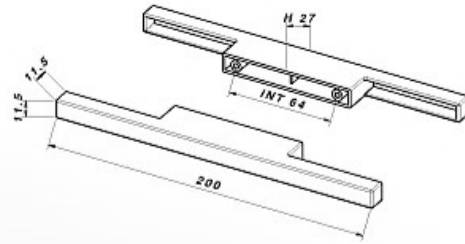
M2222/F

ABS
INTERASSE: 96mm / LUNGHEZZA: 152.40mm
LARGHEZZA: 14mm / ALTEZZA: 27mm
Centre Distance: 96mm / Length: 152.4mm
Width: 14mm / Height: 27mm



M2220/F

ABS
INTERASSE: 64mm / LUNGHEZZA: 200mm
LARGHEZZA: 11.5mm / ALTEZZA: 11.5mm
Centre Distance: 64mm / Length: 200mm
Width: 11.5mm / Height: 11.5mm

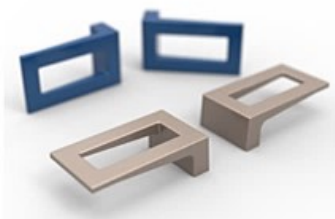




M2242/F
MODULABLE HANDLE



M2238/F C.D.32
M2239/F C.D.64
M2240/F C.D.96



M2235/F C.D.32



M2233/F
KNOB



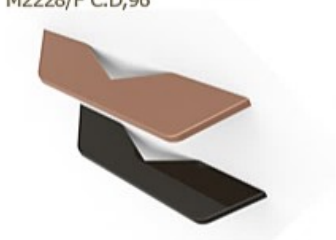
M2230/F C.D.96



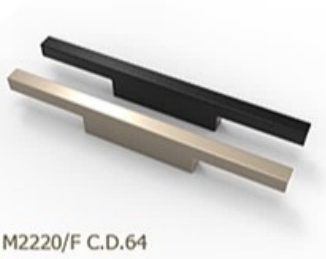
M2228/F C.D.96



M2225/F C.D.96



M2222/F C.D.96



M2220/F C.D.64

view all

—
www.polimor.it

POLIMOR

POLIMOR Srl
Via della Tecnologia
61122 Pesaro - ITALY
Ph.: +39 0721482157
Fax: +39 0721481362
polimor@polimor.it

Upgrade 1.0
Technical office 2022 : REV.00