

# KINVARO

## F-20 folding flap fitting



- Holds flap securely in any position
- Extremely smooth movement
- Adjustable spring force
- Integrated adjustable closing damper
- Flap with 3-dimensional adjustment – height, side, angle: direct adjustment  $\pm 1.5$  mm
- 3-dimensional reveal height, side, depth adjustment: Direct adjustment
- Opening limiter adjustable to  $90^\circ$
- Wide range of applications for many different flap materials
- Fast, tool-free clip fitting of the front
- Pre-assembled Euro screws and positioning pins for easy mounting of the fitting on the side wall
- High stability
- Weight 3.8 to 19.2 kg
- Range of flaps:  
Width: 400–1200 mm  
Height: 520–900 mm
- Cover caps in grey, similar to RAL 7045



### APPLICATION RANGE

Cabinet height	Guide lever	Flap weight incl. handle (kg)		
		Spring B	Spring C	Spring D
520–559	Type 2	4.6–13.8	–	–
560–599	Type 3	4.4–12.6	7.0–14.7	–
600–649	Type 4	4.1–12.1	6.8–15.8	–
650–699	Type 5	3.8–11.4	6.7–16.9	–
700–749	Type 6	–	6.5–16.4	10.0–18.0
750–799	Type 7	–	6.0–15.6	8.6–19.2
800–849	Type 7	–	–	7.8–18.0
850–900	Type 7	–	–	6.5–16.5

### ORDER INFORMATION

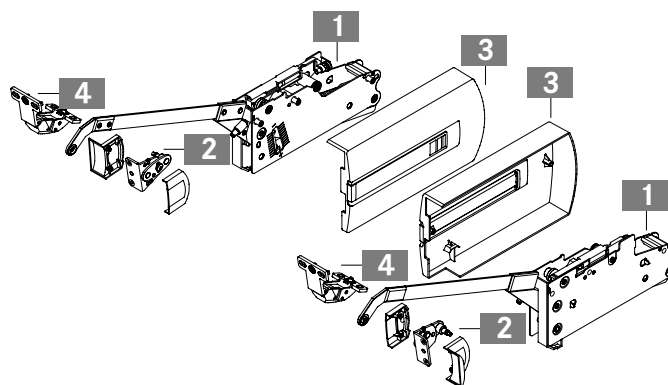
Kinvaro F-20 set				Cover cap, grey		
Cabinet height				Spring B	Spring C	Spring D
520–559				<b>F152145237</b>	–	–
560–599				<b>F152145238</b>	<b>F152145239</b>	–
600–649				<b>F152145240</b>	<b>F152145241</b>	–
650–699				<b>F152145242</b>	<b>F152145243</b>	–
700–749				–	<b>F152145244</b>	<b>F152145245</b>
750–900				–	<b>F152145246</b>	<b>F152145247</b>

#### Note:

Tiomos  $120^\circ$  hinges with spring, without damper, and Tiomos mounting plates for top panel must be ordered separately.

**Kinvaro F-20 set** comprises:

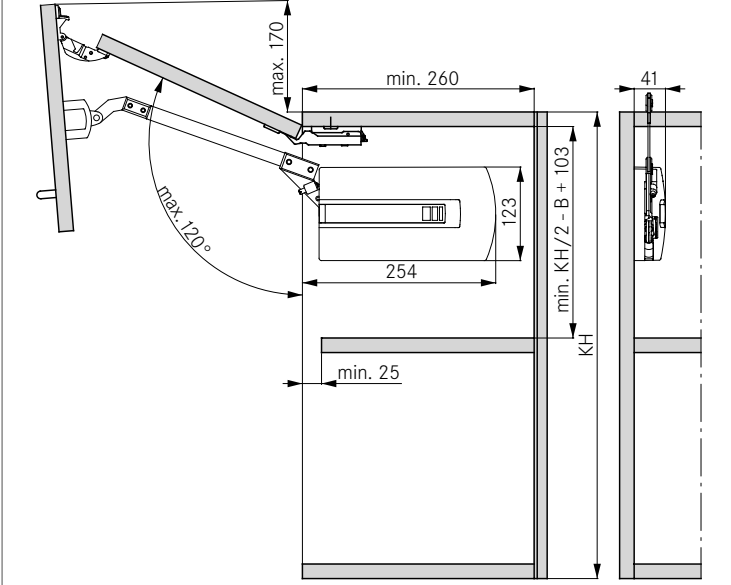
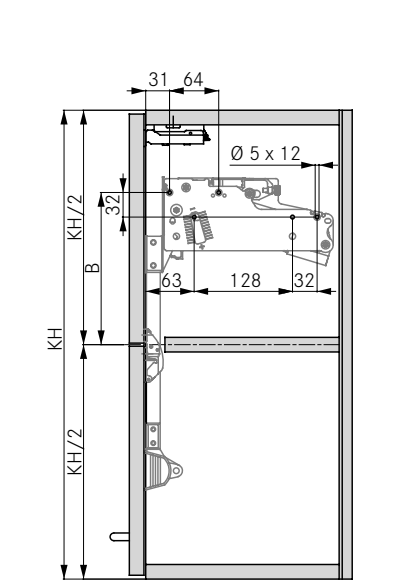
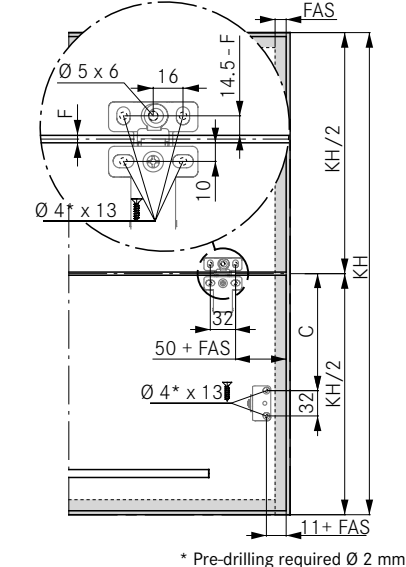
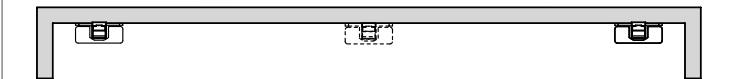
- 1** Fitting, right and left (1x)
  - 2** Screw-on bracket for wood, incl. cover caps (2x)
  - 3** Cover caps, right and left (1x)
  - 4** Link hinges (2x)
- Paper template (1x)  
Installation instructions (1x)



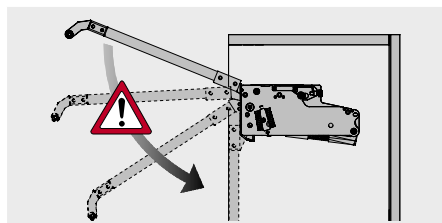
Kinvaro F-20 adjustment options	284		
Assembly aids	656		

ASSEMBLY AND INSTALLATION INSTRUCTIONS FOR CABINET HEIGHT 520-799

All dimensions in millimetres

Required space	Side wall drilling positions	Side wall drilling distance																																																			
		<table border="1"> <thead> <tr> <th>KH</th> <th>Type</th> <th>B</th> </tr> </thead> <tbody> <tr><td>520-529</td><td>2</td><td>173</td></tr> <tr><td>530-539</td><td>2</td><td>158</td></tr> <tr><td>540-549</td><td>2</td><td>143</td></tr> <tr><td>550-559</td><td>2</td><td>128</td></tr> <tr><td>560-569</td><td>3</td><td>183</td></tr> <tr><td>570-579</td><td>3</td><td>168</td></tr> <tr><td>580-589</td><td>3</td><td>153</td></tr> <tr><td>590-599</td><td>3</td><td>138</td></tr> <tr><td>600-609</td><td>4</td><td>208</td></tr> <tr><td>610-619</td><td>4</td><td>198</td></tr> <tr><td>620-629</td><td>4</td><td>178</td></tr> <tr><td>630-639</td><td>4</td><td>168</td></tr> <tr><td>640-649</td><td>4</td><td>158</td></tr> <tr><td>650-699</td><td>5</td><td>225</td></tr> <tr><td>700-749</td><td>6</td><td>235</td></tr> <tr><td>750-799</td><td>7</td><td>250</td></tr> </tbody> </table>	KH	Type	B	520-529	2	173	530-539	2	158	540-549	2	143	550-559	2	128	560-569	3	183	570-579	3	168	580-589	3	153	590-599	3	138	600-609	4	208	610-619	4	198	620-629	4	178	630-639	4	168	640-649	4	158	650-699	5	225	700-749	6	235	750-799	7	250
KH	Type	B																																																			
520-529	2	173																																																			
530-539	2	158																																																			
540-549	2	143																																																			
550-559	2	128																																																			
560-569	3	183																																																			
570-579	3	168																																																			
580-589	3	153																																																			
590-599	3	138																																																			
600-609	4	208																																																			
610-619	4	198																																																			
620-629	4	178																																																			
630-639	4	168																																																			
640-649	4	158																																																			
650-699	5	225																																																			
700-749	6	235																																																			
750-799	7	250																																																			
	<p>Front installation for wooden and frame flaps (min. 45 mm width)</p>	<p>Front drilling distance</p>																																																			
	 <p>* Pre-drilling required Ø 2 mm</p>	<table border="1"> <thead> <tr> <th>KH</th> <th>Type</th> <th>C</th> </tr> </thead> <tbody> <tr><td>520-529</td><td>2</td><td>133</td></tr> <tr><td>530-539</td><td>2</td><td>148</td></tr> <tr><td>540-549</td><td>2</td><td>163</td></tr> <tr><td>550-559</td><td>2</td><td>178</td></tr> <tr><td>560-569</td><td>3</td><td>145</td></tr> <tr><td>570-579</td><td>3</td><td>160</td></tr> <tr><td>580-589</td><td>3</td><td>175</td></tr> <tr><td>590-599</td><td>3</td><td>190</td></tr> <tr><td>600-609</td><td>4</td><td>138</td></tr> <tr><td>610-619</td><td>4</td><td>148</td></tr> <tr><td>620-629</td><td>4</td><td>168</td></tr> <tr><td>630-639</td><td>4</td><td>178</td></tr> <tr><td>640-649</td><td>4</td><td>188</td></tr> <tr><td>650-699</td><td>5</td><td>146</td></tr> <tr><td>700-749</td><td>6</td><td>156</td></tr> <tr><td>750-799</td><td>7</td><td>166</td></tr> </tbody> </table>	KH	Type	C	520-529	2	133	530-539	2	148	540-549	2	163	550-559	2	178	560-569	3	145	570-579	3	160	580-589	3	175	590-599	3	190	600-609	4	138	610-619	4	148	620-629	4	168	630-639	4	178	640-649	4	188	650-699	5	146	700-749	6	156	750-799	7	166
KH	Type	C																																																			
520-529	2	133																																																			
530-539	2	148																																																			
540-549	2	163																																																			
550-559	2	178																																																			
560-569	3	145																																																			
570-579	3	160																																																			
580-589	3	175																																																			
590-599	3	190																																																			
600-609	4	138																																																			
610-619	4	148																																																			
620-629	4	168																																																			
630-639	4	178																																																			
640-649	4	188																																																			
650-699	5	146																																																			
700-749	6	156																																																			
750-799	7	166																																																			
	<p><b>Number of hinges on top panel</b> From 900 mm cabinet width: 3 hinges. Hinges with spring require an opening angle of min. 120°</p>																																																				
<p><b>Calculation of flap weight</b>            Flap width x flap height x flap thickness x density <sup>1</sup> + weight of handle <sup>2</sup> = weight of flap  <sup>1</sup> Densities: MDF board 0.85 kg/dm<sup>3</sup>, chipboard 0.65 kg/dm<sup>3</sup>, spruce/pine 0.45 kg/dm<sup>3</sup>  <sup>2</sup> For bar handles, allow 0.1 kg per 100 mm of handle length. We recommend a trial fitting</p>																																																					

WARNING



**Important!**  
**Caution – risk of injury!**  
**Fitting is spring-tensioned!**

LEGEND

- B Side wall drilling dimension
- C Front drilling dimension
- F Reveal
- FAS Front overlay, side
- KH Cabinet height



# KINVARO

## F-20 folding flap fitting

### ASSEMBLY AND INSTALLATION INSTRUCTIONS FOR CABINET HEIGHT 800-900

All dimensions in millimetres

Required space	Side wall drilling positions	Side wall drilling distance																	
		<table border="1"> <thead> <tr> <th>KH</th> <th>Type</th> <th>B</th> </tr> </thead> <tbody> <tr> <td>800-849</td> <td>7</td> <td>103</td> </tr> <tr> <td>850-900</td> <td>7</td> <td>110</td> </tr> </tbody> </table> <table border="1"> <thead> <tr> <th colspan="2">Shelf distance</th> </tr> <tr> <th>KH</th> <th>D</th> </tr> </thead> <tbody> <tr> <td>800-849</td> <td>≤293</td> </tr> <tr> <td>850-900</td> <td>≤312</td> </tr> </tbody> </table>	KH	Type	B	800-849	7	103	850-900	7	110	Shelf distance		KH	D	800-849	≤293	850-900	≤312
KH	Type	B																	
800-849	7	103																	
850-900	7	110																	
Shelf distance																			
KH	D																		
800-849	≤293																		
850-900	≤312																		
<p>Front installation for flaps with standard aluminium frame profiles (19 mm)</p>	<p>Front installation for wooden and frame flaps (min. 45 mm width)</p>	<p>Front drilling distance</p>																	
<p>* Pre-drilling required Ø 2 mm</p>	<p>* Pre-drilling required Ø 2 mm</p>	<table border="1"> <thead> <tr> <th>KH</th> <th>Type</th> <th>C</th> </tr> </thead> <tbody> <tr> <td>800-900</td> <td>7</td> <td>304</td> </tr> </tbody> </table>	KH	Type	C	800-900	7	304											
KH	Type	C																	
800-900	7	304																	
	<p><b>Number of hinges on top panel</b> From 900 mm cabinet width: 3 hinges. Hinges with spring require an opening angle of min. 120°</p>																		
<p><b>Calculation of flap weight</b>            Flap width x flap height x flap thickness x density <sup>1</sup> + weight of handle <sup>2</sup> = weight of flap  <sup>1</sup> Densities: MDF board 0.85 kg/dm<sup>3</sup>, chipboard 0.65 kg/dm<sup>3</sup>, spruce/pine 0.45 kg/dm<sup>3</sup>  <sup>2</sup> For bar handles, allow 0.1 kg per 100 mm of handle length. We recommend a trial fitting</p>																			

Kinvaro F-20 adjustment options 284

Assembly aids 656

1

2

3

4

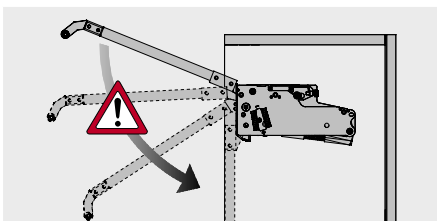
5

6

7

8

**WARNING**



**Important!**  
**Caution – risk of injury!**  
**Fitting is spring-tensioned!**

**LEGEND**

- B Side wall drilling dimension
- C Front drilling dimension
- D Distance
- FF Reveal
- FAS Front overlay, side
- KH Cabinet height