

DYNAMOOV SOFT-CLOSE

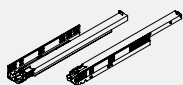
Full extension slide 30 kg



- Excellent running characteristics
- Fully synchronised slide technology
- Soft-close damping system
- Stepless self-locking of the drawer when pushed onto the slide
- Integrated height adjustment, tool-free + 3.5 mm
- Optional depth adjustment + 3.5 mm

ORDER INFORMATION

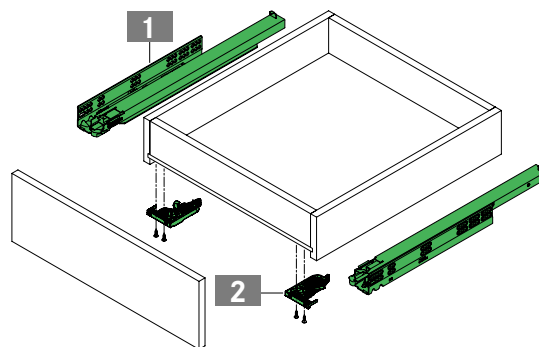
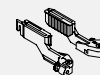
1					
Dynamooov full extension slide Soft-close					
Set: one left, one right					
NL	30 kg				
	Art. No.				
250	F130107760				
270	F130107761				
300	F130107764				
320	F130107767				
350	F130107768				
380	F130107771				
400	F130107772				
420	F130107775				
450	F130107776				
480	F130107779				
500	F130107780				
520	F130107783				
550	F130107784				
600	F130107787				



2					
Front locking device (1D)					
Set: one left, one right					
Art. No.					
F134140216					



Optional: depth adjustment (1D)					
Set: one left, one right					
Art. No.					
F134101313					



PAGE REFERENCES

Technical information	562		
Assembly aids	668		

PLANNING DIMENSIONS

All dimensions in millimetres

Installation dimensions

Drawer

Inset drawer

NL	SKL	MET
250	240	253
270	260	273
300	290	303
320	310	323
350	340	353
380	370	383
400	390	403
420	410	423
450	440	453
480	470	483
500	490	503
520	510	523
550	540	553
600	590	603

Mounting position for front locking device

Back panel hole

Mounting positions for full extension slide

30 kg

250 - 320

350 - 450

480 - 520

550

600

MET = NL + 3

Euro screw Ø 6.3 x 14 mm

Chipboard screw Ø 4 x 16 mm

Screw head Ø 7 mm

LEGEND

HV	Height adjustment	MET	Minimum installation depth
KV	Cabinet front edge	NL	Nominal length
LWK	Inside cabinet width	SKL	Drawer length
LWS	Inside drawer width		



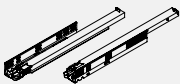
DYNAMOOV SELF-CLOSE


Full extension slide 30 kg

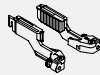


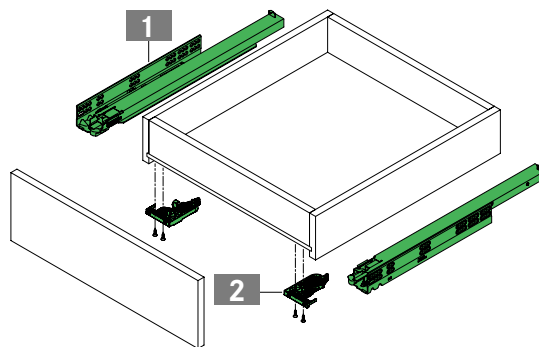
- Excellent running characteristics
- Fully synchronised slide technology
- Self-close locking system
- Stepless self-locking of the drawer when pushed onto the slide
- Integrated height adjustment, tool-free + 3.5 mm
- Optional depth adjustment + 3.5 mm

ORDER INFORMATION

1		Dynamooov full extension slide Self-close		Set: one left, one right			
NL	30 kg						
	Art. No.						
270	F130101161						
300	F130101162						
350	F130101164						
400	F130101166						
450	F130101168						
500	F130101170						
550	F130101172						

2		Front locking device (1D)		Set: one left, one right			
		Art. No.					
		F134140216					

Optional: depth adjustment (1D)		Set: one left, one right			
		Art. No.			
		F134101313			



PAGE REFERENCES

Technical information	562		
Assembly aids	668		

PLANNING DIMENSIONS

All dimensions in millimetres

Installation dimensions

Drawer

Inset drawer

NL	SKL	MET
270	260	273
300	290	303
350	340	353
400	390	403
450	440	453
500	490	503
550	540	553

Mounting position for front locking device

Back panel hole

Mounting positions for full extension slide

Euro screw Ø 6.3 x 14 mm
 Chipboard screw Ø 4 x 16 mm
 Screw head Ø 7 mm

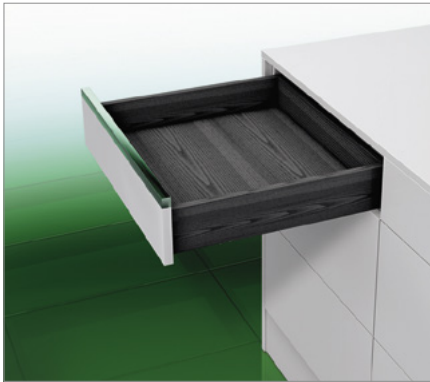
LEGEND

HV	Height adjustment	MET	Minimum installation depth
KV	Cabinet front edge	NL	Nominal length
LWK	Inside cabinet width	SKL	Drawer length
LWS	Inside drawer width		



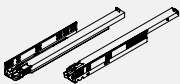
DYNAMOOV TIPMATIC


Full extension slide 30 kg

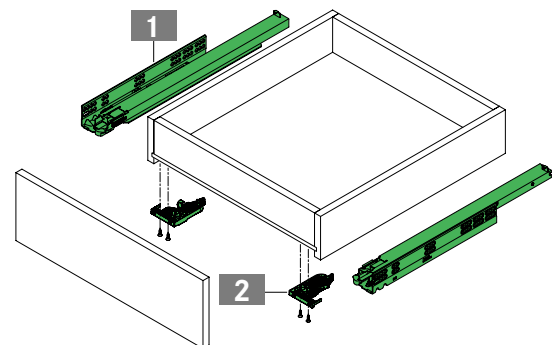


- Full extension slide Tipmatic for handle-free fronts
- Tipmatic opening unit integrated into the slide
- Excellent running characteristics
- Fully synchronised slide technology
- Integrated height adjustment, tool-free + 3.5 mm
- Integrated front gap adjustment + 1.5 mm
- No damage to the Tipmatic unit when the drawer is pulled open in the conventional way
- Optimal opening by pressing in the central third of the front panel

ORDER INFORMATION

1		Dynamoov full extension slide Tipmatic		Set: one left, one right				
NL	30 kg							
	Art. No.							
270	F130101114							
300	F130101115							
350	F130101117							
400	F130101119							
450	F130101121							
500	F130101123							
550	F130101125							

2		Front locking device (1D)		Set: one left, one right			
		Art. No.					
		F134140216					



PAGE REFERENCES

Technical information	562		
Assembly aids	668		

PLANNING DIMENSIONS

All dimensions in millimetres

Installation dimensions	Drawer	NL	SKL	MET
		270	260	273
		300	290	303
		350	340	353
		400	390	403
		450	440	453
		500	490	503
	550	540	553	
	Inset drawer 			

Mounting position for front locking device	Back panel hole

Mounting positions for full extension slide	30 kg	
	270 - 300	Euro screw Ø 6.3 x 14 mm
	350 - 450	Chipboard screw Ø 4 x 16 mm
	500	Screw head Ø 7 mm
	550	
	MET = NL + 3	

LEGEND

HV Height adjustment
 KV Cabinet front edge
 LWK Inside cabinet width
 LWS Inside drawer width

MET Minimum installation depth
 NL Nominal length
 SKL Drawer length



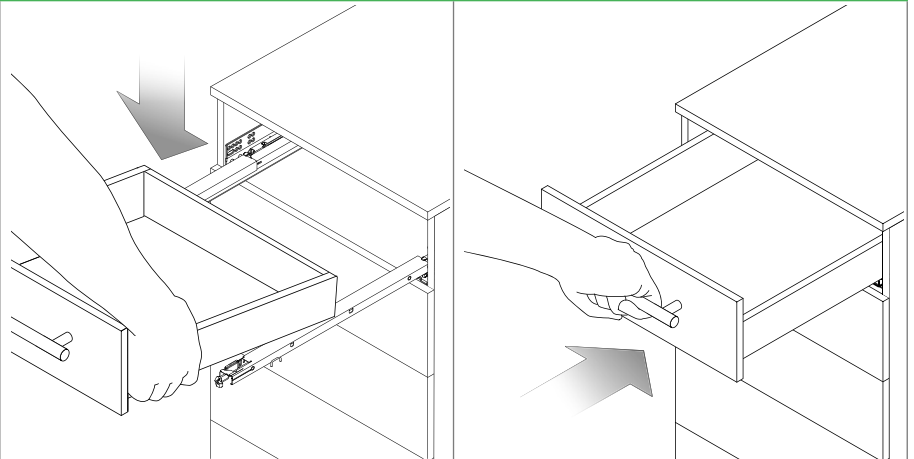
DYNAMOOV

Technical information

PLANNING DIMENSIONS

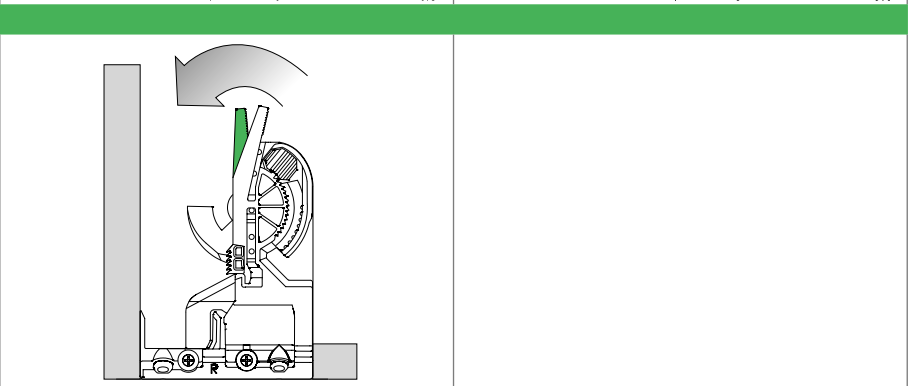
Inserting the drawer

Place the drawer on the extended Dynamooov slides and slide in until it audibly engages.



Removing the drawer

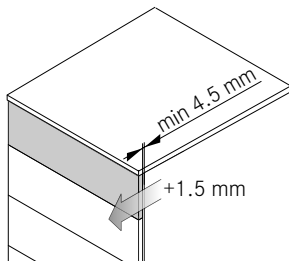
Pull out the drawer, actuate the lever of the front locking device on both sides and pull the drawer forwards, away from the slide.



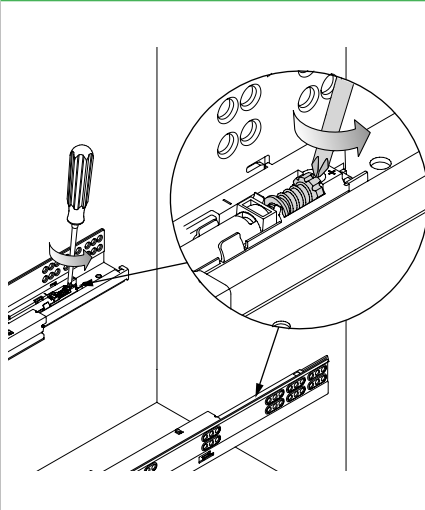
DYNAMOOV TIPMATIC

Front gap adjustment (max. +1.5 mm)

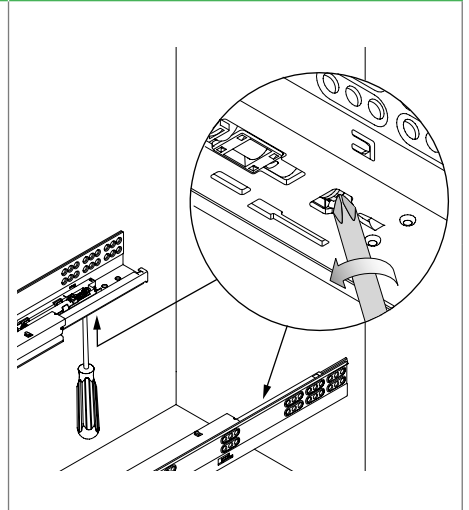
The reliable opening and closing of the drawer depends on the front gap setting (min. 4.5 mm = factory setting). If the front height is greater than 300 mm, the front gap must be increased to the maximum of 6 mm.



Front gap adjustment from above



Front gap adjustment from below



NOTES

Mounting of cabinet members:

The screw recommendations are intended for reference.

Assemblers must ensure that the substrate material is thick enough.

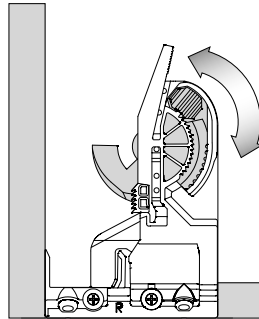
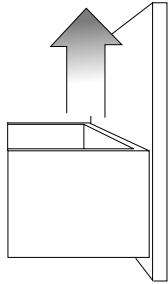
PAGE REFERENCES

Dynamooov Soft-close	556
Dynamooov Self-close	558

Dynamooov Tipmatic	560
Assembly aids	668

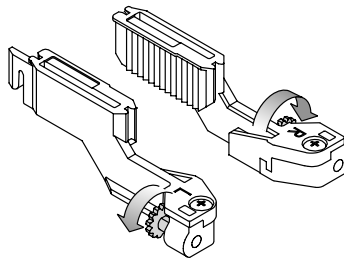
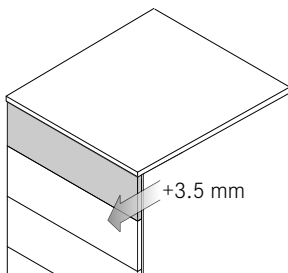
ADJUSTMENT

Height adjustment (max. +3.5 mm)



Depth adjustment (max. +3.5 mm)

Can be used for Dynamoov Soft-close/Self-close.



1

2

3

4

5

6

7

8

LEGEND

